



Whales & Dolphins of Antarctica & the Chilean Fjords  
Tour Code Anta6

☎ 01962 302 086

[sales@wildlifeworldwide.com](mailto:sales@wildlifeworldwide.com)

[www.wildlifeworldwide.com](http://www.wildlifeworldwide.com)

ABTOT  
Member 5199



**WILDLIFE**  
WORLDWIDE

TRAVEL | EXPERIENCE | CONSERVE



At Wildlife Worldwide we have been creating **outstanding wildlife holidays** for over 30 years. Established in 1992, our first tours were in Africa, due to founder Chris Breen's love of Zambia's Luangwa Valley where he managed bush camps and guided safaris. Our collection has grown over the years and now covers all corners of the globe from Africa, Asia and the Americas, to Europe and the Polar regions. From safaris and whale-watching to bear watching and wildlife cruising, we have something for all wildlife enthusiasts. Here are a few great reasons to choose Wildlife Worldwide...

### **A knowledgeable and passionate team of wildlife experts**

We have travelled the world, managed safari lodges, worked as tour leaders and safari guides, and have years of experience in the travel industry. We continually research, explore and photograph wildlife and wilderness areas around the world to keep our knowledge up to date and consistently arrange outstanding trips.

### **Our personal service**

Our **personal service**, built on the foundations of quality, knowledge, expertise, reliability and professionalism. A dedicated Wildlife Travel Consultant is available to discuss your holiday at any point.

### **Flexible tailor-made holidays**

We offer **flexibility**, so whether you wish to upgrade your flights, change your accommodation, add in some extra days, or plan something special to coincide with an anniversary or birthday, please tell us, so we can perfect your holiday.

### **Dedicated group departures**

We have our own series of dedicated group departures and in addition we sell a hand-picked collection of departures offered by our overseas partners.

### **Expert local naturalist guides**

Our **naturalist guides** and **tour leaders** are truly outstanding. We only work with the finest guides who offer an exceptional level of expertise, knowledge and passion, and always go the extra mile.

### **Committed to conservation and responsible tourism**

Since its inception, Wildlife Worldwide has placed a special emphasis on **sustainable travel** – focussing on the environment, the wildlife, and the communities that live in close proximity.

### **We are independent**

We are a privately-owned independent company – something that is increasingly rare these days! The advice we give you is completely impartial.

### **Peace of mind**

In addition to offering you 100% financial protection through our **Air Tour Organisers License** (ATOL 10544) and our membership of the **Association of Bonded Travel Organisers Trust Limited** (5199) we have a 24-hour emergency line should anything happen whilst you are away.

We look forward to welcoming you on your next Wildlife Worldwide holiday.

## INTRODUCTION

We are thrilled to introduce a truly exceptional voyage to one of the most remote and awe-inspiring regions on Earth – an exclusive whale watching expedition to the Antarctic Peninsula and the Chilean Fjords. Travelling aboard our privately chartered vessel, this small-group adventure of just 70 guests promises a once-in-a-lifetime experience, combining unique access, extraordinary wildlife encounters, and a comprehensive exploration of the Antarctic Peninsula.

Working in close partnership with our trusted partner, Antarctica 21, we are delighted to once again charter the Magellan Explorer — a superb boutique expedition vessel. This exclusive itinerary has been expertly designed to coincide with the height of the austral summer, when Antarctica is alive with feeding whales, well-established penguin colonies, and seals hauled out on drifting ice floes. Our charter flight to the South Shetland Islands avoids the Drake Passage and allows more time to be spent in Antarctica.

Cetacean species we are likely to encounter include humpback, fin, sei and Antarctic minke whales, along with orca, hourglass and Peale's dolphins. Previous trips with Mark have also recorded southern right whale dolphins, southern right whales, long-finned pilot whales, southern bottlenose whales and even Cuvier's beaked whales, which remain rare but exciting possibilities.

During this exclusive charter, we'll explore the best whale-watching grounds at the most rewarding time of year. Zodiac cruising forms a key part of our expedition, offering opportunities to encounter humpback whales and, at times, Antarctic minke whales, while our onboard naturalists and marine specialists provide fascinating insights into their behaviour and the rich ecology of these cold southern seas. Between whale encounters, we look forward to unforgettable moments among colonies of Adélie, chinstrap and gentoo penguin, and sightings of seals including Antarctica's apex predator, the leopard seal, as well as Weddell and crabeater seals.

With all our guests able to land at once, there's ample opportunity to land ashore and experience the pristine Antarctic wilderness. Surrounded by towering mountains and sculpted blue-and-white icebergs, the scene is transformed by the ethereal glow of the polar light during long summer days. Sunrises and sunsets here are truly unforgettable, bathing the glaciers and ice-strewn bays in warm, shifting hues that accentuate the region's stark, untouched beauty.

Our team of expert guides, photographers, and wildlife specialists will host a full programme of talks and workshops designed to deepen your understanding of Antarctica's wildlife, natural history and remarkable geology — all while enjoying the comfort and elegance of a modern expedition ship purpose-built for polar exploration.

This voyage offers more than an Antarctic expedition — it's a rare chance to discover one of the last truly wild places on Earth. To watch whales surge to the surface as they feed beneath towering ice cliffs and drifting icebergs is a moment few ever experience and none forget.

## TESTIMONIALS

*"This is an incredibly exciting time to visit the Antarctic Peninsula, for two fantastic reasons: whales and light. From spectacular numbers of humpbacks gorging on krill to inquisitive Antarctic minke whales and pods of hunting killer whales, the Peninsula is alive with whales in early March. This is also the best time of year for the warm, golden light - perfect for photography against such a spectacular wilderness backdrop and the perfect way to begin and end each day. And, of course, there will be loads of other wildlife, from penguins to seals, visits to historical sites, and much more."* **Mark Carwardine**

## Planned Departure Dates

DATE	FLIGHT INCLUSIVE	LAND ONLY
06/03/2028	£18995.00	£16495.00

## OUTLINE ITINERARY

<b>06 Mar 2028</b>	Depart UK arriving the next day.
<b>07 Mar 2028</b>	Santiago de Chile (1 night).
<b>08 Mar 2028</b>	Punta Arenas (1 night).
<b>09 Mar 2028</b>	Antarctic Peninsula (11 nights).
<b>20 Mar 2028</b>	Drake Passage (2 nights).
<b>22 Mar 2028</b>	Chilean Fjords (3 nights).
<b>25 Mar 2028</b>	Buenos Aires (1 night).
<b>26 Mar 2028</b>	Fly back to UK arriving the next day.

## HIGHLIGHTS

- 🐾 Encounter an array of exceptional marine wildlife, including humpback, fin, sei and Antarctic minke whale, plus orca, hourglass and Peale's dolphin
- 🐾 Visit established colonies of Adélie, gentoo and chinstrap penguin in the latter stages of the breeding season, with juveniles taking their first tentative swims
- 🐾 Opportunity to encounter an impressive array of seal species, from Weddell and crabeater to Antarctica's apex predator, the formidable leopard seal
- 🐾 Seabirds are a constant presence, with species such as wandering and black-browed albatross, Antarctic petrel, snow petrel, Wilson's storm petrel, Cape petrel and Arctic tern often soaring effortlessly above the ship
- 🐾 A wonderfully varied journey filled with superb wildlife opportunities, ice-choked waterways, jagged glaciers, blue-and-white icebergs and rugged mountain scenery
- 🐾 Experience some of the most dramatic sunrises and sunsets on Earth, as warm shades of pink, orange and gold bathe the utterly breathtaking wilderness
- 🐾 Gain an in-depth knowledge of the region from our expert team, enhancing your experience through guided excursions, lectures, and workshops

## TOUR LEADERS

### Chris Breen

Chris studied Geographical Sciences in Plymouth, however his first encounter with the wider world was in 1983, when he headed off to Zambia. Under the tutelage of the late Norman Carr, the pioneer of walking safaris, he worked as a wildlife guide and managed two wilderness camps in the Luangwa Valley. On his return to the UK, he had a spell at a major travel agency in London before setting up Wildlife Worldwide in 1992. Since then, he has travelled the world in search of first-class wildlife experiences. Chris devised the Festival of Wildlife concept and, in addition to running the increasingly busy travel company, he takes great pleasure in leading trips to far-flung destinations.



Chris is an ardent conservationist, enthusiastic photographer and birder, and lover of all things wild!

### Mark Carwardine

Mark Carwardine is a zoologist, an active and outspoken conservationist, an award-winning and bestselling author, a TV and radio presenter, a widely published photographer, a wildlife tour operator and leader, a lecturer, and a BBC Wildlife magazine columnist.

He co-presented the BBC-TV series *Last Chance to See*, with the comedian and actor Stephen Fry, and the BBC-TV series *Museum of Life*. He also presented the weekly half-hour radio programme *Nature* on BBC Radio 4 for many years.

He has written more than 60 books, including *Field Guide to Whales, Dolphins and Porpoises*, *The Shark Watcher's Handbook* and *The Guinness Book of Animal Records*. His latest is *How to Photograph Garden Birds*.

He was Chairman of the Judging Panel of the prestigious Wildlife Photographer of the Year competition for seven years (2005-2011) and was selected as one of the world's 40 most influential nature photographers in *Outdoor Photography* magazine.



### Rachel Ashton

Rachel Ashton has worked closely with conservationist, zoologist, wildlife photographer, author and broadcaster Mark Carwardine since 2004, when she became his Project Manager. Over the years, Rachel has organised and handled bookings on Mark's trips and assisted on many of his wildlife adventures, such as whale watching in Baja California (amounting to more than 50 trips), ship charters to Baffin Island, Antarctica and South Georgia, and snorkelling with manatees in Florida and sperm whales in Dominica.



A keen diver, Rachel is passionate about marine wildlife. She started out in advertising and marketing in Australia, before a happy career switch to BBC Wildlife magazine in Bristol, where she ultimately became Features Editor. She also wrote captions for the prestigious Wildlife Photographer of the Year competition for 15 years (1999-2015).

### Tim Stenton

Tim is a naturalist, wildlife guide, photographer and author, with a particular passion for whales and dolphins. He lives on the Black Isle in Scotland, where he runs a self-catering holiday business and spends as much time as possible watching cetaceans from the shores of the Moray Firth. His current tally stands at nine species (and counting!), all recorded from his own garden.

Widely travelled, Tim first met Mark Carwardine and Rachel Ashton many years ago while travelling as a guest on a Baja California expedition, and he has since returned to the region on several occasions. His first book, *Moray Firth Dolphins*, was published in 2013, and he is also co-author of *Europe's Sea Mammals*, reflecting his long-standing passion for marine mammals.





## DETAILED ITINERARY

**06 Mar 2028**

### Fly to Chile

Depart from London Heathrow to Santiago Arturo Merino Benítez International Airport.

**07 Mar 2028**

### Welcome to Santiago

We arrive in the welcoming city of Santiago, nestled between snow-capped mountains and the Atlantic Ocean. We transfer to our hotel and the remainder of the day is free to relax or explore at your own pace.

### Santiago de Chile

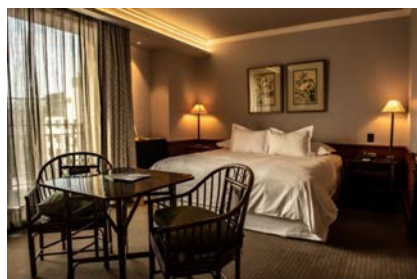
Santiago, Chile's vibrant capital, sits against the backdrop of the Andes, blending historic charm with modern city buildings. In its heart, Plaza de Armas, brims with colonial architecture, boasting the Metropolitan Cathedral and National History Museum. The towering Gran Torre Santiago offers panoramic views, while colourful neighbourhoods, such as Bellavista, are full of artistic energy. Modern skyscrapers contrast with Baroque churches, offering striking architectural diversity. From world-class museums to lively street markets, Santiago offers a fusion of history, culture, and urban delights.



### Overnight at The Singular Hotel, Santiago

Centrally located, this stylish hotel combines traditional architecture with contemporary design. The hotel offers excellent service, elegant lounges, friendly outside terraces and a smart restaurant and bar.

Rooms are light, spacious and thoughtfully designed with traditional décor and furniture. There are a variety of rooms and one suite, but all feature a large desk and seating area, LCD TV, WiFi, safe, air-conditioning, minibar and tea and coffee facilities. One of the property's highlights is its rooftop pool and bar, providing a special location to relax and swim while taking in the city views. There is also a wellness spa with three treatment rooms, a patisserie and coffee shop, and the main Singular Restaurant, which serves an excellent range of international dishes. The hotel's central location in the Bohemian centre of the city overlooking San Cristobal Hill makes it ideal for visiting the many museums, shops, cafés, and restaurants nearby.



**08 Mar 2028**

## Today we travel to Punta Arenas

This morning we fly to Punta Arenas, Chile's southernmost city, set on the shores of the Magellan Strait and long regarded as the gateway to Antarctica.

Fly from Santiago Arturo Merino Benítez International Airport to Punta Arenas Presidente Carlos Ibáñez International Airport.

### Punta Arenas

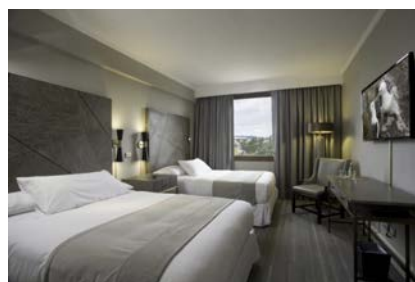
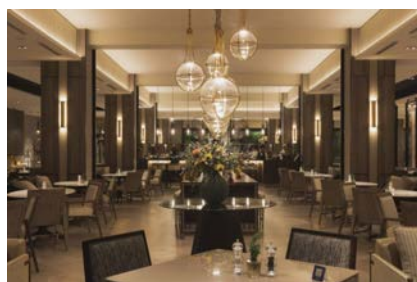
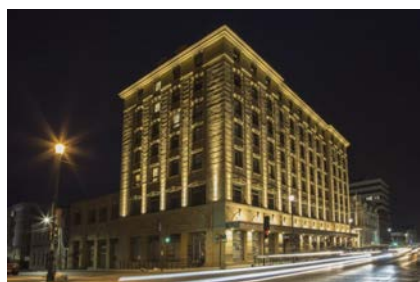
Punta Arenas has an interesting history dating back to 1848 when it was first established as a small penal colony. It is the southernmost city on the continental landmass (Ushuaia in Argentina is further south but is on the island of Tierra del Fuego). Today, Punta Arenas boasts a population of over 100,000 inhabitants, and the city is an important location for accessing the Antarctic Peninsula.

Visitors can enjoy walking to Cerro de la Cruz for views across the colourful rooftops to the Strait of Magellan and the island of Tierra del Fuego beyond. The main square, Plaza de Armas, is surrounded by imposing buildings and is home to a memorial of Portuguese explorer Ferdinand Magellan.



### Overnight at Hotel Cabo de Hornos

Situated in the heart of the old town of Punta Arenas, Hotel Cabo de Hornos combines comfortable and stylish rooms with excellent views of the town and the surrounding landscape, including the Strait of Magellan. The rooms feature en suite bathrooms, pillow-top beds, flat-screen televisions and complimentary WiFi. The hotel also has an on-site restaurant, fitness centre and elegant communal areas for guests to enjoy.



**09 Mar 2028**

### Fly to King George Island and embark

Today we fly across the Drake Passage on our exclusively chartered flight to King George Island, at the northern tip of the Antarctic Peninsula. On arrival, we walk to the shore where we are met by the expedition team from Magellan Explorer and transferred by Zodiac to our privately chartered ship, which will be our home for the next 16 nights.



## Antarctic Peninsula

The Antarctic Peninsula is the most accessible region of the vast white continent, boasting a treasure trove of captivating wildlife and stunning vistas. Its waterways, cloaked in ice, are adorned with sculpted icebergs and imposing glaciers, serving as the habitat for a rich diversity of marine life, including more whales and dolphins than anywhere else on the planet.

The peninsula, essentially a rugged mountain chain rising around 2,000 metres high, experiences a summer melting season, which creates numerous isolated, snow-free areas. These areas provide refuge for an array of primitive plants, microbes, and invertebrates, establishing ideal breeding grounds for a multitude of bird species and marine mammals.

Venturing across the peninsula, you encounter southern fur seals alongside native ice-breeding species such as crabeater, Weddell, and leopard seals. During the summer months, the air vibrates with calls of breeding bird species, including southern fulmar, blue-eyed shag, and the elegant Antarctic tern. Playful colonies of chinstrap and gentoo penguins frolic amidst rocky shores, while petrels such as Wilson's storm and snow petrels skilfully burrow into the ground to build their nests.

It's not just the land that teems with life; the surrounding waters pulse with activity, hosting a spectacular array of cetaceans. Hourglass dolphins play alongside majestic humpback whales, while torpedo-shaped Antarctic minke whale and striking orca complete this icy paradise.



## Begin your stay aboard the Magellan Explorer (Fly-Sail) (16 nights)

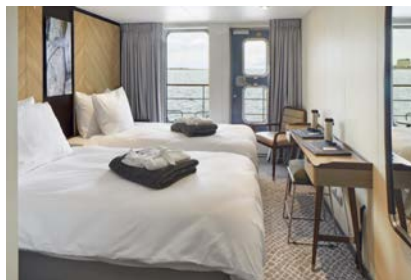
Magellan Explorer is a modern and stylish expedition vessel custom-built for Antarctic cruises, combining comfort with exploration and wildlife. The ship has a fleet of ten Zodiacs, allowing for immersive exploration and wildlife watching. Specialist features include a glass-enclosed observation lounge and presentation room, a spacious dining room with large windows, and an excellent library. Expert polar guides deliver educational programs, while the outdoor observation deck offers expansive views. The forward-facing observation deck leads to the ship's bow, which is a superb spot for viewing marine wildlife.

Built to the latest Polar Code specifications, the ship carries a Polar Class 6 ice-class. For comfortable navigation and manoeuvrability, the ship features stabilisers and bow and stern thrusters. In order to reduce the environmental footprint, the vessel is equipped with an energy-recovery system that recycles the heat produced by the engines to warm up the ship and its water supply.

On board fly-sail voyages, the maximum capacity is limited to 76 guests, meaning there is no requirement to



rotate landings. On board these voyages, the vessel has seven categories of accommodation, and except for a small number of porthole cabins, all cabins have private balconies. All cabins feature a wardrobe, an individually controlled heating system, a sitting area, and a private bathroom with a shower and heated floors.

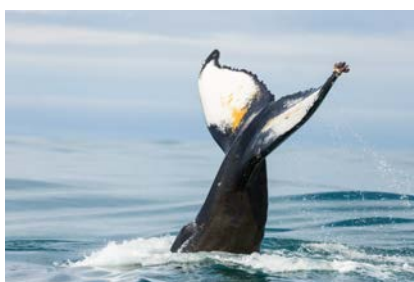


Breakfast and dinner are included.

**10 to 19 Mar 2028**

### **Wildlife-Focused Exploration of the Antarctic Peninsula**

During our 10 days exploring the Antarctic Peninsula, our focus is firmly on wildlife, and in particular the extraordinary abundance of whales that arrive in these nutrient-rich waters during the peak feeding season. Travelling aboard our small, purpose-built expedition ship allows us to operate with exceptional agility, responding to weather, ice and wildlife opportunities. There is no fixed daily schedule; instead, our days are shaped by what we encounter, ensuring we maximise every opportunity to observe whales and Antarctica's wider wildlife at its most active.



A typical day might begin with an early morning Zodiac cruise through ice-choked channels, scanning the glassy waters for the blows of feeding humpback whales, or the unmistakable dorsal fin of a passing orca. With our small group size and swift disembarkation, we benefit from unhurried, close-range encounters as whales surface, lunge-feed or move inquisitively around us. In these waters, we hope to encounter humpback, Antarctic minke, and with luck, orca.



When conditions allow, we complement our Zodiac cruises with landings ashore to explore penguin rookeries and dramatic coastal landscapes. This is a superb time to observe established colonies of Adélie, gentoo and chinstrap penguins, with season-hardened adults and fledged juveniles gathering at the water's edge ahead of their first journeys to sea. We also hope to encounter a variety of seals hauled out on ice floes or lounging on beaches, including Weddell, crabeater, leopard and Antarctic fur seal, with the occasional sighting of the impressive southern elephant seal. Between excursions, the scenery itself is constantly captivating, with

towering glaciers, sculpted blue and white icebergs, and rugged mountain backdrops illuminated by some of the most dramatic sunrises and sunsets on Earth.



In addition to shore excursions and Zodiac cruises, we may ship cruise among some of the narrow, dramatic straits separating offshore islands from the mainland or linger in scenic bays to watch whales travelling or feeding. During these ship cruises, enjoy time out on deck or relax in the observation lounge. Keep an ear out for the distant creak and rumble of glaciers as they carve their way from summit to sea. If the bridge is open, you may like to visit the Captain and their team to learn about the navigation and operation of the vessel, as well as enjoy uninterrupted views of Antarctica in all its splendour.



At this time of year, whales are at their most active and sightings are often at their very best. Having spent the austral summer feasting on vast swarms of krill, these magnificent creatures are fuelled for their long migration north and exhibit a remarkable range of behaviours. We hope to encounter whales lunge feeding at the surface, mouths agape as they surge through dense clouds of krill, with towering icebergs forming an extraordinary backdrop. Other behaviours we hope to witness include powerful breaches, deep dives marked by lifting flukes, energetic lobtailing and moments of quiet curiosity as whales spy hop beside us, offering unforgettable encounters in one of the most dramatic wildlife settings on Earth.







During the evenings or periods of repositioning, we provide an outstanding programme of talks, lectures and informal workshops led by our expert team. Drawing on expertise in marine science, cetacean research, polar history, geology, photography and natural history, these sessions deepen our understanding of the wildlife and environments we are exploring, while remaining entirely optional and relaxed. Every day is different, but the guiding principle remains the same: flexibility, time and access, allowing us to fully appreciate Antarctica's breathtaking wilderness and make the most of exceptional whale-watching opportunities during the peak whale season.



Breakfast, lunch and dinner are included.

**20 & 21 Mar 2028**

### **Drake Passage**

The legendary Drake Passage connects the rugged terrain of southern South America and the majestic Antarctic Peninsula. Despite its formidable reputation, this expanse of water beckons intrepid travellers with the promise of the untouched beauty of Antarctica's pristine wilderness. Named after the renowned English seafarer Sir Francis Drake, who sailed these waters during the late 16th century, this passage is steeped in maritime history and adventure.

Today, the Drake Passage unveils an awe-inspiring panorama, where a mesmerising spectacle of life flourishes. Witness the graceful flight of royal and wandering albatross, Cape and Wilson's storm petrel, and the audacious swoops of south polar skuas amidst swirling currents and windswept skies. Beneath the surface, a variety of cetaceans can be found. Encounter these gentle giants, from majestic humpback whales to striking orca, and revel in the company of playful pods of dolphins frolicking in the waves.



### **Northbound across the Drake Passage**

Over the next two days we travel north across the Drake Passage, using our time at sea to scan for an



abundance of pelagic wildlife. These nutrient-rich waters offer excellent opportunities to encounter a variety of cetaceans, with likely sightings of humpback and fin whale, and the possibility of sei whales moving through the area. Dolphins are often a highlight, particularly hourglass, and Peale's dolphin as we approach Cape Horn, with occasional sightings of southern right whale dolphin and dusky dolphin. With luck, we may also glimpse more elusive species such as long-finned pilot whale and on truly exceptional occasions blue whale, southern right whale, Cuvier's beaked whale, southern bottlenose whale and orca (different ecotypes to those found around the Antarctic Peninsula). Overhead, vast seabirds follow the ship, from wandering, royal and black-browed albatross to giant petrels, Cape petrels, southern fulmars and shearwaters. As we approach South America, the open ocean gives way to the calm, sheltered waterways of the Chilean Fjords, where dramatic landscapes and new wildlife encounters await.



Breakfast, lunch and dinner are included.

**22 to 24 Mar 2028**

### **Chilean Fjords**

A vast network of deep, glacier-carved channels winds through the coastal mountains of southern Chile, creating a labyrinth of sheltered waterways, steep-sided fjords and remote inlets shaped by ice and sea. Much of this region remains inaccessible by land, preserving an overwhelming sense of scale, solitude and pristine wilderness.

Towering mountains and snow-capped peaks rise from the water's edge, while tidewater glaciers spill into the fjords and waterfalls cascade down forested slopes. These calm, protected waters support a rich and productive marine ecosystem. Seals and southern sea lions are frequently seen hauled out on rocky islets, while dolphins often accompany vessels through the channels. Seabirds can be seen in abundance here, with albatross, petrel, cormorant and other coastal species often encountered.



### **Discovering Wildlife in the Chilean Fjords**

This region supports a rich and often underappreciated marine ecosystem, and our days here are shaped entirely by wildlife movements, weather and sea conditions. Navigating deep into the Chilean fjords and the Strait of Magellan, we explore a network of sheltered channels and open passages that are ideal for small cetaceans. These nutrient-rich waters are home to a diversity of species, and we spend our time scanning for blows, surface disturbances and feeding activity. Our main focus here will be Peale's, Commerson's and Chilean dolphin.



The fjords are equally rewarding for birdlife and terrestrial species. Along the forested shores we watch for southern sea lion hauled out on rocky islets, while overhead we may see southern giant petrel, black-browed albatross, cormorant and a variety of coastal seabirds. Between wildlife encounters, the scenery itself is a constant highlight, with cascading waterfalls, hanging glaciers and an ever-changing light.



As we continue north through the fjords towards Punta Arenas, the landscape and wildlife subtly shift. Commerson's dolphin are likely here, particularly around Punta Arenas and the eastern Strait of Magellan, and there is also a small chance of encountering king penguins along this stretch — never guaranteed, but a wildcard species that adds further variety to our journey.

Breakfast, lunch and dinner are included.

**25 Mar 2028**

### **Disembark in Ushuaia**

This morning we disembark after breakfast, with the option to begin the homeward journey via Buenos Aires or continue the adventure on one of our exciting extensions.

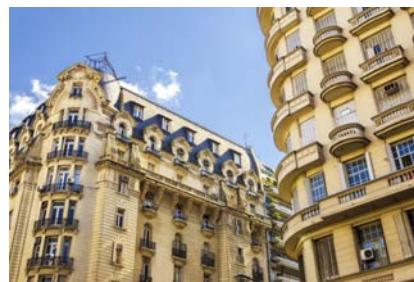
Fly from Ushuaia Malvinas Argentinas International Airport to Buenos Aires Jorge Newbery International Airport.

Today, you will be transferred by road to your next accommodation or location.

### **Buenos Aires**

Buenos Aires is the vibrant, dynamic capital of Argentina, renowned as a city of flair, high drama and culture, with a distinctly European flavour. This is embodied in its most famous export: the music and dance of tango. With its traditional cafés, fabulous steak restaurants, bustling grand avenues and cobbled streets lined with magnificent faded mansions, this is a city worth exploring.

Though the biggest passions here are football, tango and food, this is also a city of theatre, opera, history, culture and art. Summers in Buenos Aires are hot, while winter nights can be icy. The city is a major port, and there are regular ferry services across the estuary of the Rio de la Plata to neighbouring Uruguay.

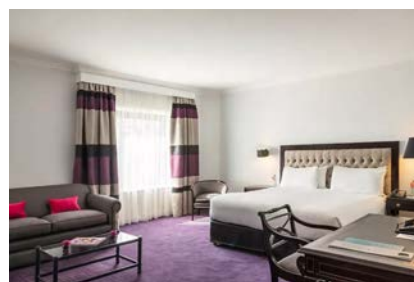


### Overnight at Sofitel Recoleta

Sofitel Buenos Aires Recoleta is an elegant 5-star hotel set in one of the city's most refined neighbourhoods. The spacious guest rooms and suites are tastefully designed, with modern amenities to ensure a relaxing stay. Many rooms enjoy views across the surrounding neighbourhood, while the hotel's wellness facilities provide the perfect place to unwind after a day of sightseeing.

The on-site restaurant serves beautifully presented Argentine-influenced cuisine, alongside a stylish bar for evening drinks. Guests can also enjoy a leisurely breakfast each morning before heading out to explore.

Perfectly positioned, the hotel is within easy reach of Recoleta's cultural highlights, including museums, theatres and shopping areas.



Breakfast is included.

**26 Mar 2028**

### Travel back to the UK

Enjoy breakfast and some time at leisure before your journey home.

Today, you will be met and transferred to the airport.

Depart from Buenos Aires Ezeiza International Airport to London Heathrow.

Breakfast is included.

**27 Mar 2028**

### Arrive back in the UK

### ITINERARY NOTES

*The above itinerary is for guidance only - programmes may vary depending on sea, ice and weather conditions, as well as wildlife opportunities. A degree of flexibility is needed to make the most of your polar adventure. Your Wildlife Worldwide tour leaders and on board expedition team will use their specialist knowledge and expertise to ensure they choose the best itinerary options for our polar quest.*

### The Voyage Price:



Please see the voyage price below, depending on your preferred cabin type. Pricing is 'per person' and based on twin/double occupancy.

Cabin Category	Flight Inclusive	Voyage Only	Flight Inclusive Single	Voyage Only Single
Triple Suite	£18,595	£15,995	<i>Not Available</i>	<i>Not Available</i>
Porthole Cabin	£19,095	£16,495	£30,645	£28,045
Veranda Cabin	£22,095	£19,495	£35,745	£33,145
Deluxe Veranda Cabin	£23,595	£20,995	£38,295	£35,695
Deluxe Suite	£26,095	£23,495	£42,545	£39,945
Penthouse Suite	£27,595	£24,995	£45,095	£42,495

### Departure Date:

We plan to depart the UK on 6th March 2028 and will require an overnight stay in Santiago and Punta Arenas, prior to flying to Antarctica for embarkation on 8th March 2028. Our UK departure date will be confirmed once flight schedules are released (approximately 11 months prior to departure).

### Flight Inclusive Package:

Our flight inclusive package includes international and domestic flights in economy class, and accommodation in Santiago and Buenos Aires as specified in your itinerary.

Please note airlines typically release flight schedules approximately 11 months prior to departure. Once these schedules are announced (expected April / May 2027), we will confirm our exact flight route and travel dates.

We have allocated funds for the flights within your package cost. However, in the rare and unlikely event that flight prices significantly exceed our estimated amount, a small additional cost may need to be passed on to you. However, this is highly uncommon, and we will always do our utmost to minimise any impact. We will keep you informed throughout the process and will communicate any adjustments should they arise.

If you wish to arrange your own flights please ensure you arrive into Punta Arenas by 2pm on 8th March and book onward arrangements in Ushuaia from late afternoon on 25th March.

### Flight Upgrades:

Once flight schedules are released, we can provide detailed pricing for flight upgrades. If you are interested in upgrading to premium economy, business or first class, please let us know, and we will present the options once they become available.

### Arrival in Santiago:

Based on current flight schedule, we plan to arrive into Santiago during the morning and have the remainder of the day at leisure to relax and explore the city. Our rooms at the Singular Hotel will be available for check in from 3pm onwards. Should you wish, early check in can be arranged (at an additional cost). Please let us know if you would like us to add this for you.

### Flying to Antarctica:

Travelling by chartered aircraft across the Drake Passage, we fly directly from Punta Arenas to King George Island in Antarctica — a rare and exhilarating experience that very few travellers ever experience. From the air, weather permitting, the first views of the South Shetland Islands and the icy landscapes beyond offer a

memorable arrival at the White Continent.

These specialist aircraft are perfectly suited to polar operations and are operated by Aerovías DAP, a highly respected airline with more than four decades of experience flying in Patagonia and Antarctica.

This flight includes a baggage allowance of 20kg checked luggage plus 5kg hand luggage, allowing you to comfortably bring the essential cold-weather gear and camera equipment needed for this extraordinary expedition.

### **Fitness & Mobility:**

Expedition voyaging is designed to accommodate a wide range of abilities, however a certain level of mobility is required to participate in onshore activities and navigate the ship safely. Embarking and disembarking from Zodiac boats is essential for participating in shore excursions and wildlife encounters. You should be able to step on and off the Zodiacs with assistance from crew members using handrails and grab handles for support. During onshore excursions you may need to walk short distances on uneven terrain, sandy beaches, or rocky shores. While strenuous hikes are not compulsory, being able to walk steadily and navigate moderate terrain is important for enjoying the wildlife encounters and exploring the natural surroundings. Please also be mindful of the cold weather and the impact this may have on your mobility.

Onboard the ship you should be able to move around safely and comfortably, especially during potentially rough seas or inclement weather conditions. This includes being able to navigate stairs, corridors, and outdoor decks while using handrails and grab handles for support as needed. If you have specific mobility concerns or accessibility needs please discuss these with our friendly team.

## **FLIGHT SCHEDULE**

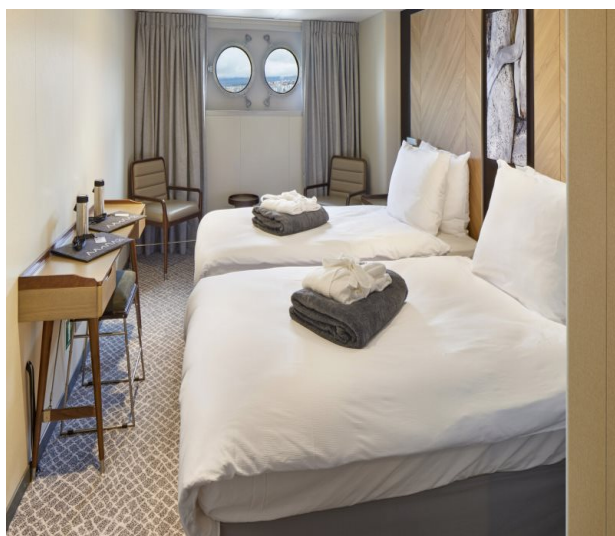
1. +1 = Arriving the following day
2. Dates and times are 'local time' and subject to alteration at the carrier's discretion

DAY	FLIGHT	FROM	TO	DEPARTURE	ARRIVAL	AIRLINE
Day 1	BA0251	London Heathrow - LHR	Santiago - SCL	22:15	09:50 +1	British Airways
Day 3	LA0083	Santiago - SCL	Punta Arenas - PUQ	08:50	12:14	LATAM
Day 20	AR1881	Ushuaia - USH	Buenos Aires - AEP	12:45	16:15	Aerolineas Argentinas
Day 21	BA0248	Buenos Aires - EZE	London Heathrow - LHR	13:35	08:35 +1	British Airways

INCLUSIONS	EXCLUSIONS
<ul style="list-style-type: none"> <li>• International and domestic flights in economy class (with flight inclusive package only)</li> <li>• Pre- and post-voyage arrangements in Santiago &amp; Buenos Aires (with flight inclusive package only)</li> <li>• Pre-voyage arrangements in Punta Arenas</li> <li>• Onboard accommodation and meals during the voyage as described</li> <li>• Wine, beer and soft drinks with lunch and dinner on board</li> <li>• Snacks, tea and coffee throughout the voyage</li> <li>• All shore excursions and activities throughout the voyage</li> <li>• A full programme of talks, presentations and workshops</li> <li>• Complimentary use of rubber boots</li> <li>• Conservation fund contribution</li> </ul>	<ul style="list-style-type: none"> <li>• Gratuities</li> <li>• Travel insurance</li> <li>• Any personal items</li> </ul>

## More information about Magellan Explorer (Fly-Sail)

### Cabin descriptions, configurations and deck plan



#### Porthole Cabin

2 twin beds or 1 king-size bed  
Two porthole windows  
Private bathroom with separate shower  
18 square metres



#### Veranda Cabin / Single Cabin

2 twin beds or 1 king-size bed  
Private balcony with sitting area  
Private bathroom with separate shower  
19 square metres





### **Deluxe Veranda Cabin**

2 twin beds or 1 king-size bed  
Private balcony with sitting area  
Private bathroom with separate shower  
22 square metre



### **Penthouse Cabin**

2 twin beds or 1 king-size bed  
Private balcony with sitting area  
Private bathroom with separate shower  
Separate sitting area with sofa and coffee table  
33 square metres

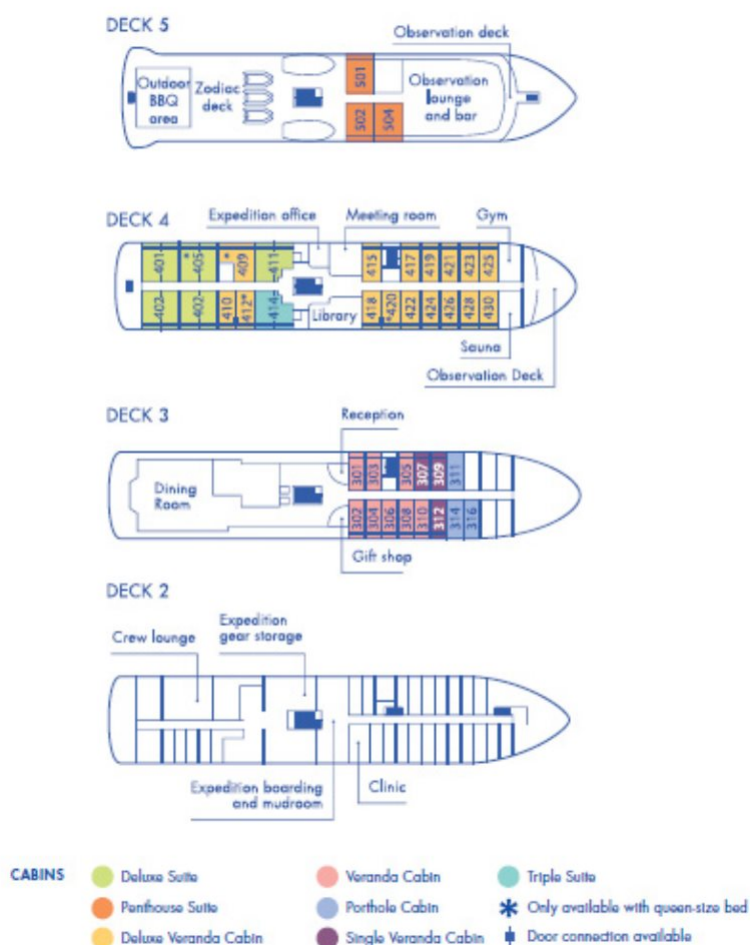


### **Grand Suite / Triple Suite**

Two-room suite  
Private balcony with sitting area  
Private bathroom with separate shower  
44 square metres

# Magellan Explorer

## Deck Plan for Air-Cruises



## PAYMENT SCHEDULE

Payment Schedule	Amount	Due Date
Deposit	20%	At time of booking
First-stage payment	20%	6 January 2027
Second-stage payment	20%	6 May 2027
Final payment	Outstanding balance	6 October 2027

## BOOKING INFORMATION

**The itinerary is perfect - I want to book.**

Great! If you wish to go ahead, booking is easy. To secure your holiday, we simply require you to:

**1. Read our booking terms and conditions** before making your booking. They are available to read on our [website](#). If you would like us to post or email you a copy, just ask.

**2. Pay a deposit**, which your consultant will usually take over the phone. If you prefer, you may also pay by

bank transfer into the account details provided below.

🐾 Account No: 13777049

🐾 Sort Code: 20-97-19

🐾 Account Name: The Natural Travel Collection Ltd (we recommend abbreviating to "TNTC Ltd")

🐾 Bank Name: Barclays

🐾 ***Please include your surname and booking number (0) as a payment reference.***

🐾 *If you wish to pay from an overseas bank account, please ask your consultant for details.*

**The deposit** we require is **£200 per person** or **20% of the total** of the total value of the trip – whichever is the greater. There may be instances when we have to ask for a higher deposit – but we will advise you if this is the case.

**Flight instalment** if your holiday includes instant purchase flights, we will also require the full payment for these at the time you book your holiday. For example, this would be required if your holiday includes flights with a low cost carrier, or if you are booking a last-minute holiday.

**3. Complete your departure lounge.** Once we receive your deposit we will set about getting all the arrangements confirmed for your holiday. We will confirm receipt of your payment and you will receive an email requiring you to submit full details of everyone travelling on your booking in your 'Departure Lounge', our secure online passenger portal.

**4. We'll re-confirm your holiday** once you have completed your 'Departure Lounge'. We'll send you a confirmation pack that clarifies the details of your booking and the reservations we have made for you, along with your ATOL certificate, the invoice for your holiday, and practical travel advice for your chosen destination.

If any changes to the proposed itinerary are necessary at any stage, your consultant will inform you and suggest a suitable alternative.

### **What about the final balance?**

We require you to make full payment **8 weeks before departure (16 weeks** in the case of wildlife cruises and 12 weeks for trips to the Falkland Islands). If you book within **8 weeks** of departure (or 16 in the case of a wildlife cruise, or 12 in the case of a trip to the Falklands), you must make full payment when you book.

### **Is my money 100% secure?**

In a nutshell, yes.

We are a fully bonded tour operator and hold an **Air Travel Organiser's Licence** (ATOL) issued by the Civil Aviation Authority (CAA), which regulates the travel industry. This provides you with complete financial protection and a guarantee on all money we receive from you.

Every holiday we sell that includes a flight element is protected under our ATOL (licence number 10544). In the unlikely event of our insolvency, the CAA will ensure that you are not stranded abroad or will arrange to refund any money you have paid to us for an advance booking.

And our membership of the **Association of Bonded Travel Organisers Trust Limited** (ABTOT) provides full financial protection under the Package Travel, Package Holidays and Package Tours Regulations 1992 for packages that exclude flights.

There is more information about your financial protection here: [www.wildlifeworldwide.com/financial-security](http://www.wildlifeworldwide.com/financial-security)



### How about travel insurance?

We strongly recommend that you take out travel insurance at the time of booking your trip as cover will commence for pre-departure cancellation from the date you purchase the insurance. This will therefore provide cover should you have to cancel your trip for an insured reason such as illness or serious accident preventing you from travelling.

The [Campbell Irvine Direct](#) insurance includes cover in the event of you having to cancel or curtail your holiday.

### Important Details

Please refer to the policy wording for full details of the cover available.

Full details of cover provided are shown on the policy document, a copy of which is available to download online. Read it carefully to ensure you are happy with the cover provided. The policy contains a 21 day cooling off period and details of how to make a claim and who to contact in the event of a medical emergency. The policy also includes certain terms and conditions, exclusions and excesses. Please note cover is excluded for any defined pre-existing medical condition from which you or any person upon whom travel depends are suffering. For any queries please contact the insurers medical helpline on 01702 242 7237 or visit their [website](#) as additional cover may be purchased directly from the insurer's medical screening helpline for certain conditions.

*The Natural Travel Collection Ltd is an Introducer Appointed Representative of Campbell Irvine Ltd. which is authorised and regulated by the Financial Conduct Authority.*

Contact [Campbell Irvine Direct](#) for your travel insurance quote.

Tel: 01702 427 236

Email: [info@campbellirvine.com](mailto:info@campbellirvine.com)

### Following travel advice

Please ensure that you fulfil all entry requirements for your final destination and any transit destinations that you may be travelling through. The Foreign Commonwealth & Development Office website offers destination advice on their [Foreign Travel Advice](#) webpage including local customs and laws.